



WHAT IS THE D3C3 VISION?
THE 2030 MOONSHOT

Reducing the regional equity gap by half while driving progress towards the education attainment goal of 60x30, leading to high-quality jobs with family-sustaining wages for those who call the Detroit region home.

WHAT IS THE APPROACH?
SYSTEMS CHANGE

D3C3 is committed to equitable systems change, achieved through college-driven and collaborative action that produces equitable practices and policies.

WHO ARE THE PARTNERS?
THE KEY STAKEHOLDERS

COLLEGES:

Henry Ford College - Macomb Community College
Monroe County Community College - Oakland Community College - Schoolcraft College - St. Clair County Community College - Washtenaw Community College
Wayne County Community College District

CONVENERS:

Detroit Drives Degrees - Detroit Regional Chamber
CEO Talent Council - Detroit Regional Chamber Foundation
MICHauto

EMPLOYERS:

Adient - BorgWarner - Bosch - Bridgewater Interiors
Brose - Denso - Detroit Manufacturing Systems
Ford - Forvia - Getman - GS3 - LEAR Corporation
Our Next Energy - Phoenix Contact - Teijin Automotive Technologies - Toyota

SUPPORTING PARTNERS:

Sixty by 30 - Ballmer Group - Michigan College Access Network
Michigan Community College Association
Ralph C. Wilson Jr. Foundation - Rocket Community Fund

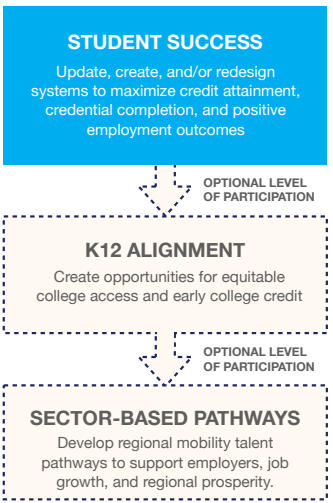
ASSISTING PARTNERS:

Amatrol - American Institutes for Research - Center for Automotive Research - Center for Occupational Research & Development - Change by Degrees - CivicLab
Lightcast - National Institute for Student Success at Georgia State University - JED Foundation

WHAT MATTERS TO US?
THE GUIDING PRINCIPLES

- College-Driven, Student-Centered**
Create student-ready colleges and systems
- Authentic Partnership**
Individual ownership, shared accountability
- Centering Racial Equity**
Racial equity isn't a thing, it's the thing
- Family Sustaining Wage Attainment**
Strengthening pathways to prosperity
- Meaningful Employer Engagement**
Stronger systems make a lasting impact
- Today's and Tomorrow's Students**
Strategies that support all students that call the Detroit region home
- Inclusivity at all Levels**
Putting the human in human-centered approach: respect for all

WHAT IS OUR WORK?
THE STRATEGIC CLUSTER AREAS



HOW WILL SUCCESS BE MEASURED?
SAMPLE SHARED METRICS AND TARGETS

MEASUREMENT	TARGET
Student Progression Measures	
Acquisition of Early College Credit	📈 TBD
High School to College Enrollment	📈 TBD
Adult Enrollment/Re-enrollment	📈 TBD
Utilization of Advising Services	📈 TBD
Utilization of Mental Health Services	📈 TBD
Utilization of Wellness and Basic Needs Services	📈 TBD
Time to Credential Completion	📈 TBD
Student Success Measures	
Credential Completion	📈 TBD
Transfer into Bachelors Degree Pathways	📈 TBD
Employment Measures	
Placement into High-Wage Jobs	📈 TBD
Labor Demand in Key Mobility Jobs	📈 TBD



WHAT DIFFERENCE DO WE MAKE?
THE OUTCOMES AND RESULTS